

NUT PRODUCTS

Hexagon Standard Nuts

Hexagon Lock Nuts

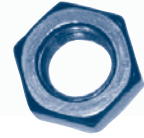
Hexagon Nylon Insert Nuts

Dome/Cap Nuts, Wing Nuts

Slotted, Coupling, Flange, Tee Nuts



Hexagon Lock Nuts



DIN 439			
304		316	
Diameter	Part Number	Pack Qty	Part Number
M3	2370	100	2500
M4	22043	100	23033
M5	22044	100	23034
M6	2372	100	2502
M8	2374	100	2504
M10	2376	100	2506
M12	2378	50	2508
M14		50	23035
M16	2380	50	2510
M20	2382	25	2512
M24		25	23036
M30		10	23037

ANSI B18.2.2 (UNC)			
304		316	
Diameter	Part Number	Pack Qty	Part Number
1/4	22045	100	23038
5/16	22046	100	23039
3/8	22047	100	23040
1/2	22048	50	23041
5/8		50	23042
3/4		25	23043
7/8		25	23044
1		25	23045

BS1083 (BSW)			
304		316	
Diameter	Part Number	Pack Qty	Part Number
1/2		50	23046

ANSI B18.2.2 (UNF)			
304		316	
Diameter	Part Number	Pack Qty	Part Number
1/4		100	23047
5/16		100	23048
3/8		100	23049
7/16		50	
1/2		50	23050
5/8		50	23051
3/4		25	23052
1		25	23053

All Stainless Self Locking Nut

COURSE PITCH			
304		316	
Diameter	Part Number	Pack Qty	Part Number
M4	22069	100	
M5	22070	100	
M6	22071	100	
M8	22072	100	
M10	22073	100	
M12	22074	50	
M16	22075	25	
M20	22076	25	

FINE PITCH			
304		316	
Pitch	Part Number	Pack Qty	Part Number
1.25	22077		
1.25	22078		

UNC			
304		316	
Diameter	Part Number	Pack Qty	Part Number
10-24	22079	100	
1/4	22080	100	
5/16	22081	100	
3/8	22082	100	
5/8	22083	25	



Dome / Cap Nuts Wing Nuts



DOME NUT - DIN 1587			
304		316	
Diameter	Part Number	Pack Qty	Part Number
M3	22086	100	
M4	22087	100	2330
M5	22088	100	2332
M6	22089	100	2334
M8	22090	100	2336
M10	22091	100	2338
M12	22092	50	2340
M16	22093	50	2342
M20		25	23073
M24		25	23074

DOME NUT - JIS B 1183			
304		316	
Diameter	Part Number	Pack Qty	Part Number
M4	2300	100	
M5	2302	100	
M6	2304	100	
M8	2306	100	
M10	2308	100	
M10X1.25P	22094	25	
M12	2310	50	
M16	2312	50	
M20	2314	25	

DOME NUT - UNC			
304		316	
Diameter	Part Number	Pack Qty	Part Number
8-32	22095	100	
10-24	22096	100	
1/4	22097	100	
5/16	22098	100	
3/8	22099	100	
7/16	22100	50	
1/2	22101	50	
5/8	22102	50	

DOME NUT - UNF			
304		316	
Diameter	Part Number	Pack Qty	Part Number
10-32	22103	100	
1/4	22104	100	
5/16	22105	100	
3/8	22106	100	
7/16	22107	50	
1/2	22108	50	

DOME NUT - BSW			
304		316	
Diameter	Part Number	Pack Qty	Part Number
1/2	22112	50	

Wing Nuts

METRIC			
304		316	
Diameter	Part Number	Pack Qty	Part Number
M3	22113	100	2400
M4	22114	100	2402
M5	22115	100	2404
M6	22116	100	2406
M8	22117	100	2408
M10	22118	100	2410
M12	22119	50	2412
M16	22120	25	23075
M20	22121	25	

BSW			
304		316	
Diameter	Part Number	Pack Qty	Part Number
1/2	22122	50	23076

UNC			
304		316	
Diameter	Part Number	Pack Qty	Part Number
10-24	22123	100	2450
1/4	22124	100	2452
5/16	22125	100	2454
3/8	22126	100	2456
1/2	22127	50	2458
5/8		25	23077
3/4	22128	25	

UNF			
304		316	
Diameter	Part Number	Pack Qty	Part Number
10-32	22129	100	
1/4	22130	100	
5/16	22131	100	
3/8	22132	100	





Hexagon Nuts Slotted, Coupling, Flange, Tee

SLOTTED HEXAGON NUTS

316

Diameter	Pack Qty	Part Number	Nut Depth mm
M12	1	23078	10.00
M16	1	23079	13.00
M20	1	23080	16.00

HEXAGON COUPLING NUTS - DIN 6334

316

Diameter	Pack Qty	Part Number	Nut Depth mm
M6	1	23081	18.00
M8	1	23082	24.00
M10	1	23083	30.00
M12	1	23084	36.00
M16	1	23085	48.00
M20	1	23086	60.00

FLANGE with SERRATIONS - DIN 6923

304

Diameter	Part Number	Pack Qty	
M5	22133	100	
M6	22134	100	
M8	22135	100	

TEE NUTS - PRONGE TYPE

304

Diameter	Part Number	Pack Qty	
M6	22136	50	
M8	22137	50	

TEE NUTS - PRONGE TYPE (UNC)

304

Diameter	Part Number	Pack Qty	
10-24	22138	50	
1/4	22139	50	
5/16	22140	25	
3/8	22141	25	

