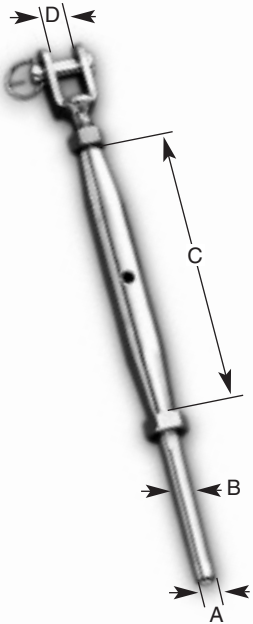


Terminals

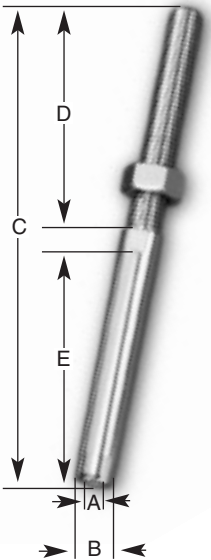
JAW/TERMINAL PIPE TURNBUCKLE - c/w NUT AISI 316



Size	Part Number	A(mm)	B(mm)	C(mm)	D(mm)
M5x3.2 (1/8)	8140	3.5	6.3	80	6.5
M6x3.2 (1/8)	8141	3.5	6.3	90	7
M6x4.0 (5/32)	8142	4.3	7.5	90	7
M8x4.0 (5/32)	8143	4.3	7.5	105	10
M10x4.8 (3/16)	8144	5.1	9.1	125	12
M10x6.3 (1/4)	8145	6.7	12.5	125	12

SWAGE STUD TERMINAL AISI 316

AISI 316



Size	Part Number	A(mm)	B(mm)	C(mm)	D(mm)	E (mm)
M5x3.2 (1/8)	8146	3.5	6.35	90	41	37
M6x3.2 (5/32)	8147	3.5	6.35	97	48	37
M6x4.0 (5/32)	8148	4.3	7.5	708	48	48
M8x4.0 (5/32)	8149	4.3	7.5	116	56	48
M10x4.8 (3/16)	8150	5.1	9.1	132	67	53
M10x6.3 (1/4)	8151	6.7	12.5	148	67	65

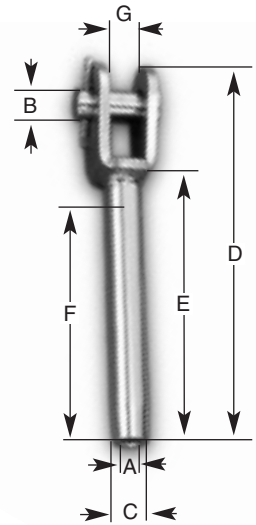


Terminals

SWAGE FORK TERMINAL

AISI 316

Size	Part Number	A(mm)	B(mm)	C(mm)	D(mm)	E(mm)	F(mm)	G(mm)
M3.2 (1/8)	8151	3.3	6	6.3	75	68	38	8
M4(5/32)	8152	4.3	8	7.5	86	77	45	11
M4.8(3/16)	8153	5.1	9	9.1	97	87	51	12
M6.3(3/16)	8154	6.7	12	12.5	121	109	64	15



SWAGE EYE TERMINAL

AISI 316

Size	Part Number	A(mm)	B(mm)	C(mm)	D(mm)	E(mm)	F(mm)	G(mm)
M3.2(1/8)	8155	3.3	6.35	6.5	62	55	13	5
M4(5/32)	8156	4.3	7.5	8.5	74	65	17	6
M4.8(3/16)	8157	5.1	9.1	10	92	80	20	7
M6.3(3/16)	8158	6.7	12.5	13.2	109	95	26	8

